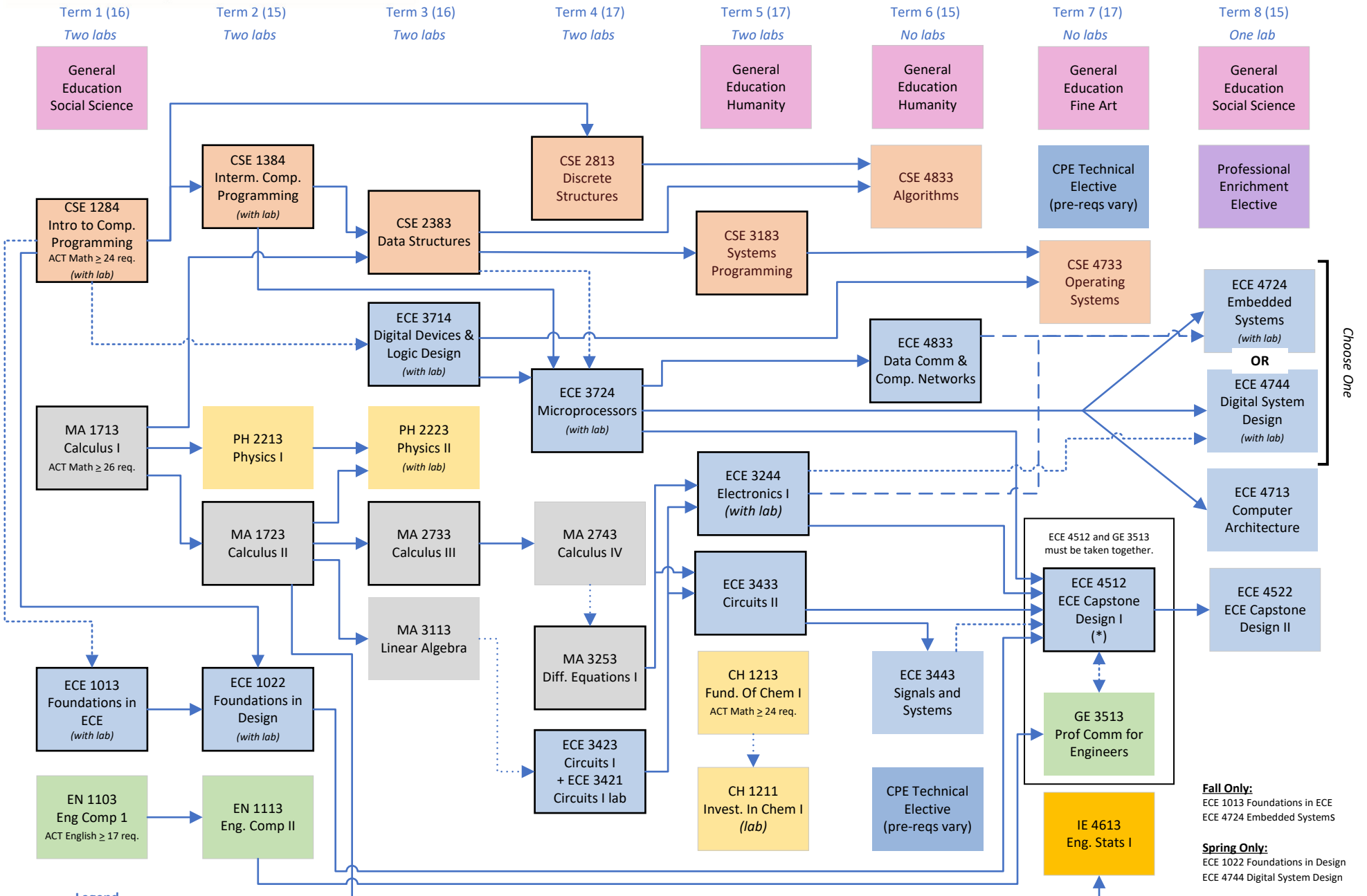




Computer Engineering (CPE) 2025 Curriculum Guide



Fall Only:
 ECE 1013 Foundations in ECE
 ECE 4724 Embedded Systems

Spring Only:
 ECE 1022 Foundations in Design
 ECE 4744 Digital System Design

- Legend**
- Prerequisite (credit required with min. grade shown)
 - Corequisite (credit in or registration for course is required)
 - - - -> Either/Or (credit required for one of these two courses)

General Education electives must come from MSU Core-Approved list • Courses outlined in black require a grade of "C" or better.
 See advisor for elective options • If you meet pre-reqs, you can take the class • You are not required to take these classes in this exact order
 * must be 70% complete with program requirements • See www.ece.msstate.edu/academics/undergraduate/